

VENDITUM

RESIDENTIAL SALES

EST. 2004



10 Pine View Close

Woodfalls, SP5 2LR

£595,000



A truly charming detached bungalow, brimming with character thanks to its brick-and-timber design beneath a classic tiled roof. Inside, the open-plan living space centres around an incredible feature fireplace with a cosy wood-burning stove, while the impressive master bedroom boasts vaulted ceilings, a dressing area, and a private en-suite.

With its magical “cabin in the woods” feel, the home backs directly onto beautiful mature woodland – imagine waking up to birdsong and the gentle rustle of leaves just beyond your garden fence.

Set within a generous garden plot with mature planting, it's perfect for children to explore or for relaxing afternoons in the sun. There's ample off-road parking too. Whether you're yearning for a slower, more peaceful pace of life or seeking a warm and welcoming family home close to good schools and local activities, this bungalow is ready for you to make lasting memories.



Entrance Hall

Wooden style floor. Door to:

Inner Hall

Radiator. Wooden style flooring,

Kitchen/Living Area 36'1" x 13'11" (11m x 4.25m)

Kitchen Area - Matching range of painted base units with solid oak worksurface over. Space for cooker, dishwasher, washing machine and american style fridge/freezer. Inset stainless steel sink unit with mixer tap.

Living Area - Vaulted ceilings with Velux windows. Feature log burner with stone hearth. Wooden style flooring. Double glazed doors and window to rear garden, sash window.

Bedroom One 16'2" x 13'1" (4.95m x 4m)

Double glazed window to rear, vaulted ceiling with Velux windows. Feature bulk head area, wooden style flooring. Door to:

Dressing Area (1.8m x 2.4m) Wooden style flooring.

En-Suite - Walk in shower with soaker head, thermostatic control and tile work. Low level WC, vanity basin, tiled floor.

Bedroom Two 12'9" x 9'0" ext to 10'9" (3.9m x 2.75m ext to 3.3m)

Double glazed window to front aspect, radiator, double wardrobe, wooden style flooring.

Bedroom Three 9'2" x 9'8" (2.8m x 2.95m)

Double glazed window to side, radiator. Built in double wardrobe, wooden style flooring.

Bedroom Four 12'7" x 9'0" (3.85m x 2.75m)

Double glazed window to front, radiator, wooden style flooring.

Family Bathroom

Freestanding bath, WC and pedestal basin. Featured tiled splashbacks, heated towel rail, tiled floor.

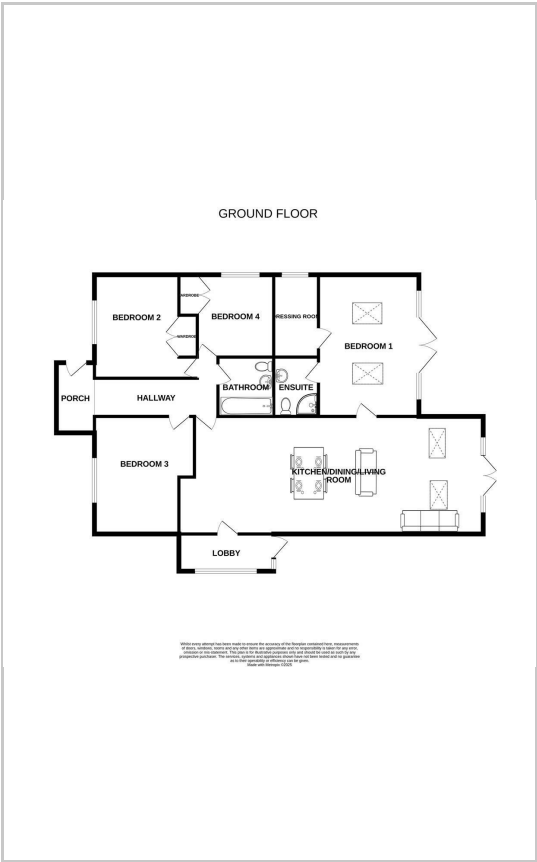
Garage 19'2" x 9'8" (5.85m x 2.95m)

Electric roller door, pedestrian door.

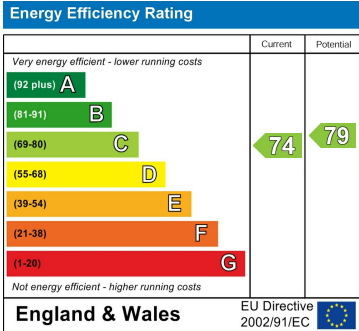
Area Map



Floor Plans



Energy Efficiency Graph



These particulars, whilst believed to be accurate are set out as a general outline only for guidance and do not constitute any part of an offer or contract. Intending purchasers should not rely on them as statements of representation of fact, but must satisfy themselves by inspection or otherwise as to their accuracy. No person in this firms employment has the authority to make or give any representation or warranty in respect of the property.